

TECSOUND® SY

TECSOUND® SY is a polymer based, bitumen-free, high-density synthetic self-adhesive membrane.

The combination of its viscoelasticity and its high-density offers good sound-insulation in different construction elements without increasing thickness.

The upper face has a finish of PE film. The lower face is self-adhesive allowing its direct application on most building surfaces.

ADVANTAGES

- High sound-insulation combined with light and rigid elements such as gypsum boards.
- High sound damping capacity on metal surfaces, thus improve insulation to rainfall noise on metal decks.
- Reaction-to fire classified.
- Flexible and adaptable to uneven surfaces.
- Good behavior at low temperatures, without breaking or cracking.
- Easy to handle and cut with a knife or scissors.
- High elongation at break.
- May act as a vapor control layer.
- Negligible water absorption.
- Ageing resistance.
- Rot proof.



APPLICATIONS

- Increases airborne noise insulation on vertical surfaces with low surface mass (plasterboard partitions, timber partitions).
- Soundproofing against airborne noise in ceilings and lightweight roofs.
- Reduction drumming noise level in laminated floors.
- Damping of noise caused by weathering such as rain and hail noise in metal deck roofs.
- Combined with sound-absorbent materials, it offers solutions with high acoustic performance.
- Its applications in the industrial field cover from the soundproofing of booths to the acoustic insulation of machine-rooms, cowling of engines, gutter pipes, sound-damping of metal sheets, etc.

REGULATIONS

- Laboratory tests reports according to EN ISO 140-1, EN ISO 140-3, EN ISO 140-6, EN ISO 140-8, EN ISO 10140 and EN ISO 717/1/2.

ACOUSTIC INSULATION

SOPREMA reserves the right to modify the information contained herein without prior notice and declines all liability in cases of errors produced due to an inappropriate use of the product. The values shown in the technical sheet are the mean values from the tests in our lab.

INSTALLATION

SUBSTRATE:

- Lends itself to all types of normal building substrates (renderings, gypsum board, metal, wood, MDF or OSB, plastic materials). The substrate must be even, smooth, clean and dry. It must also be free from elements that could damage the membrane. If the rendering is old, its condition must be checked to avoid adherence problems of the **TECSOUND SY** sheet to the rendering.

WARNINGS

- Make sure the support is free of moisture and dust before placing the membrane.
- Substrate temperature must be at least 5°C.
- Adhesion tests must be carried out in case the support is not the usual one or has some finishing treatment.

INSTALLATION OF THE MEMBRANE ON VERTICAL PARTITIONS:

- Remove the protective silicone coated film and align the membrane on the substrate. If the length of the product is too big or it is applied in rolls, peel the protective silicone paper progressively to aid installation.
- During the fitting, press all over to ensure a good bonding, taking care of avoiding any air bubbles, as they can cause a loose of adherence.



- Overlap 5 cm both lengthwise and crosswise. For application between plasterboards, it is recommended to adhere first **TECSOUND SY** to the boards. Product will be aligned in order to completely cover the surface of one board. Then the plasterboards will be fixed to the frame and the joint will be sealed with an adhesive tape. In case of partitions with two or more plasterboards per side, it is recommended to install them staggered.

WARNINGS

- Make sure that the adhesive is in contact with the entire surface of the support, especially when it is not flat.
- You should always have the caution to properly seal the joints, as small openings can reduce soundproofing of whole system.

PACKAGING AND STORAGE

TECSOUND®				
	SY 35	SY 50	SY 70	S 100
Weight (Kg/m ²)	3.5	5	7	10
Thickness (mm)	1.75	2.5	3.5	5.0
Length (m)	8.05	6.05	5.05	4.0
Width (m)	1.22	1.22	1.22	1.2
m ² /roll	9.82	7.38	6.16	4.8
Rolls/pallet	24	24	24	21
m ² /pallet	235.68	177.12	147.84	100.80
Storage	Product supplied in rolls with carton core inside and individual protection cover. Store the rolls horizontally, inside its original packaging, on a pallet protected against moisture, sunlight and heat at a temperature ≤ +35 °C. Do not stack the pallets on top of each other. The rolls have a shelf life of 1 year. In cold periods, installation can be facilitated by leaving the product at +2 °C at least during a minimum of 5h before use.			

TECSOUND®				
	S LAM 35	S LAM 50	S LAM 70	S LAM 100
Weight (Kg/m ²)	3.5	5	7	10
Thickness (mm)	1.75	2.5	3.5	5.0
Length (m)	1	1	1	1
Width (m)	1.2	1.2	1.2	1.2
m ² /sheet	1.2	1.2	1.2	1.2
Sheets/pallet		150		75
m ² /pallet		180		90
Storage	Product supplied in sheets. Do not stack the pallets on top of each other. Same storage conditions as the rolls format.			

ACOUSTIC INSULATION

SOPREMA reserves the right to modify the information contained herein without prior notice and declines all liability in cases of errors produced due to an inappropriate use of the product. The values shown in the technical sheet are the mean values from the tests in our lab.

TECHNICAL PROPERTIES

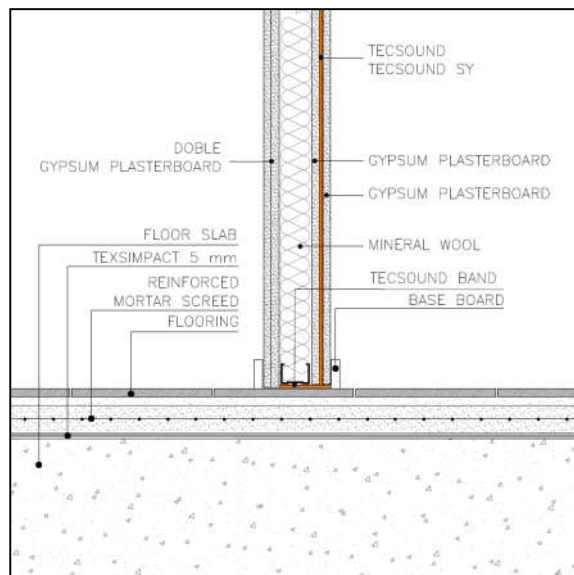
CHARACTERISTICS	Test Method	TECSOUND SY	Unit
Density	-	2.010	Kg/m ³
Tensile strength	NT-67	>30	N/50mm
Elongation	NT-67	> 500	%
Pliability	EN 1109	-25	°C
Application temperature ⁽¹⁾	-	5 up to 35	°C
Static Service Temperature	-	-10 up to 70	°C
Resistance to tearing (nail shank)	EN 12310-1	153-235 ⁽²⁾	N/50 mm
Fire classification	UNE-EN 13501-1	B-s2,d0 ⁽³⁾	-
Water vapour resistance factor	UNE-EN 1931 met B	$\mu \geq 1806$	-
Water absorption (24h a 23°C)	ISO 62 met 1	0,003	%
TVOC after 28 days	EN 16516	≤ 60	$\mu\text{g}/\text{m}^3$
Indoor Air Comfort Gold limit values	-	PASS	-
Shore hardness A	NT 74	30 \pm 10	-
Young module (E)	-	1,35637 x 1,1744	MPa
Poisson coefficient	-	0,23	-

⁽¹⁾ Ranges of temperatures during installation

⁽²⁾ Membrane with PP woven geotextile upper face

⁽³⁾ Valid from TECSOUND SY 35 to TECSOUND SY 70

(*) See our Solutions Manual or contact our Technical Department to know about other systems



SPECIAL INDICATIONS

Hygiene, Health and Environment

The product does not contain any substance which is likely to be detrimental to your health or to the environment and complies with generally admitted Health and Safety Requirements.

Quality, Environment and Safety Management

SOPREMA always recognizes as a high level of importance the quality of the products, the environment and safety. For this reason, we operate independently monitored Quality and Environment Assurance Systems in line with **EN ISO 9001** and **EN ISO 14001**.

SOUND INSULATION

CHARACTERISTICS	Test Method	Weighted sound reduction index R_w	
TECSOUND SY 35	-	23	dB
TECSOUND SY 50	EN ISO 10140-2	26	dB
TECSOUND SY 70	EN ISO 1040-3	28	dB
TECSOUND S 100	EN ISO 10140-2	32	dB

EXAMPLE OF SOUND INSULATION ON DRY PARTITION WALLS

FREQUENCY (Hz)	R with TECSOUND ^(*)	R without TECSOUND	unit
125	34,3	22,5	dB
250	43,8	40,5	dB
500	55,2	52,0	dB
1000	59,9	57,0	dB
2000	63,9	52,4	dB
4000	61,0	47,6	dB
R_w (acoustic reduction index)	56	47,6	dB

Testing according to EN ISO 10140-2:2011



ACOUSTIC INSULATION

SOPREMA reserves the right to modify the information contained herein without prior notice and declines all liability in cases of errors produced due to an inappropriate use of the product. The values shown in the technical sheet are the mean values from the tests in our lab.